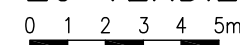
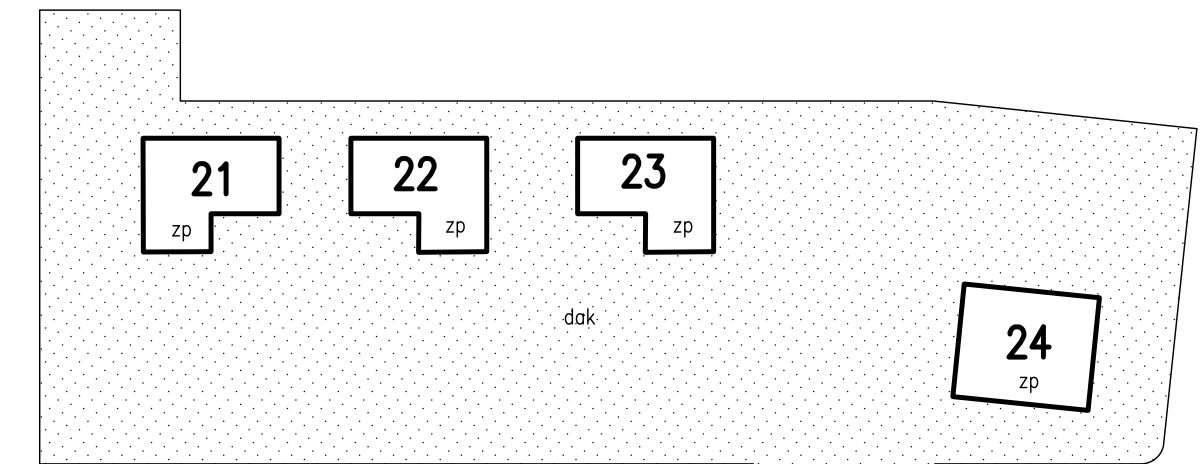
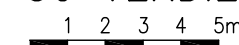




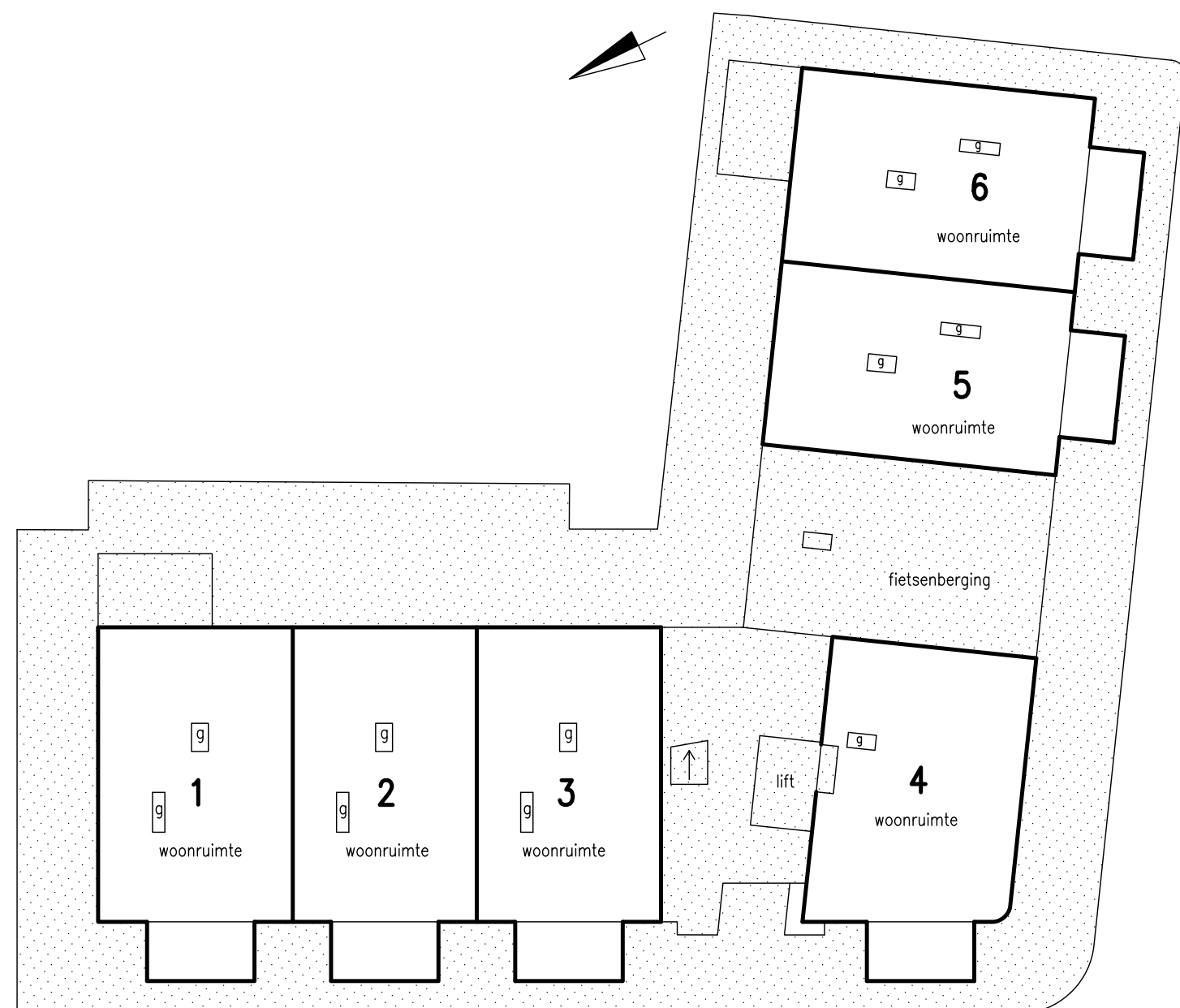
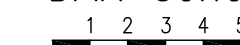
2e VERDIEPING schaal 1:200



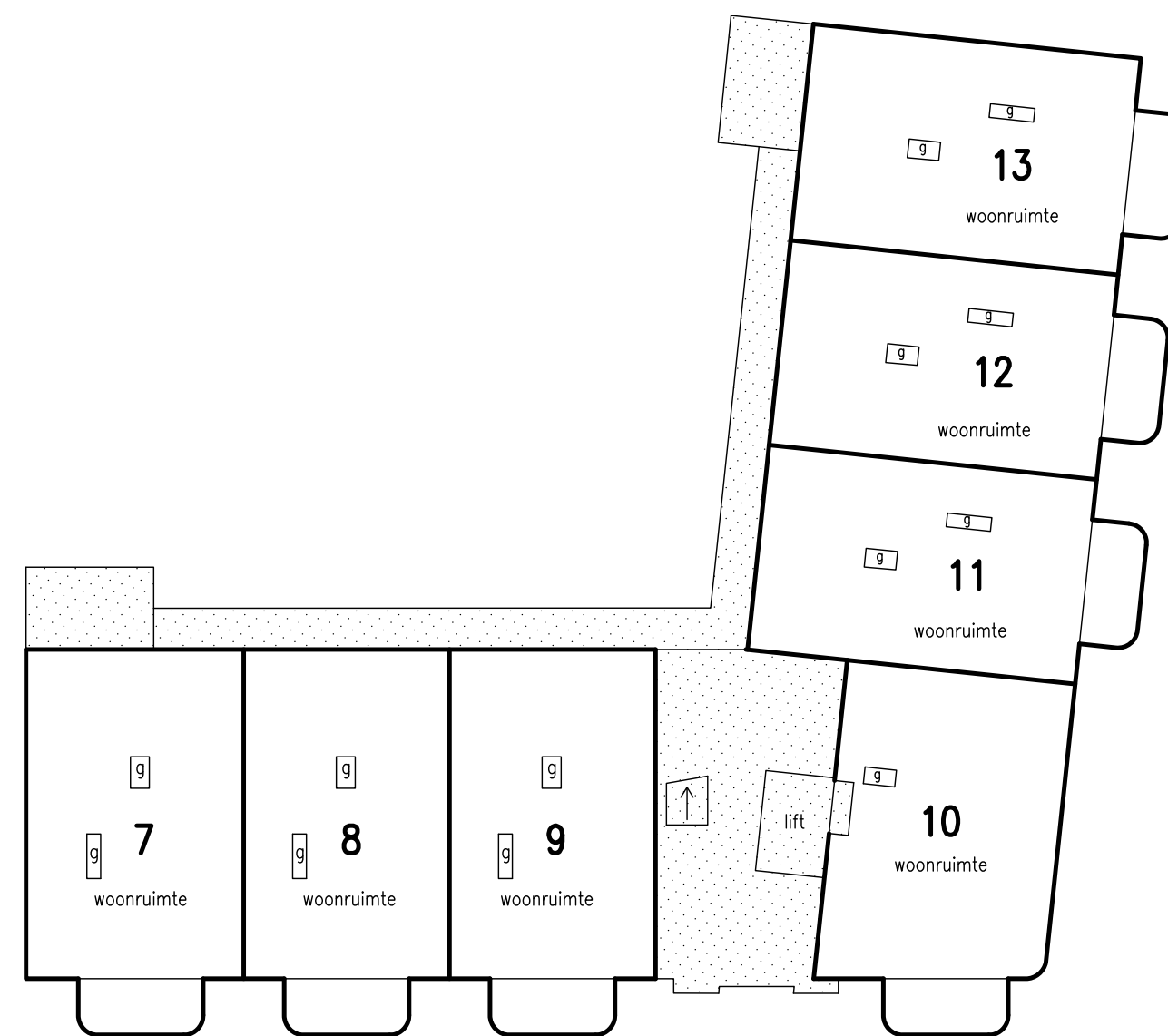
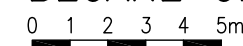
3e VERDIEPING schaal 1:200



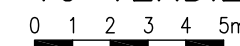
DAK schaal 1:200



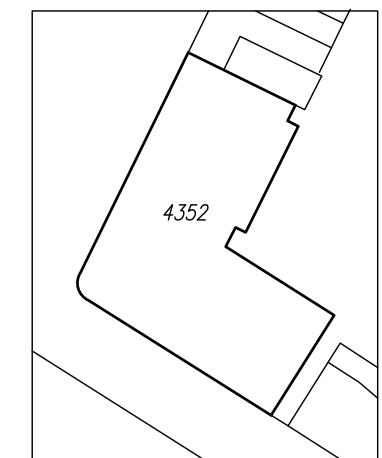
BEGANE GROND schaal 1:200



1e VERDIEPING schaal 1:200



De kadastrale grenzen zijn voorlopige grenzen.



Gemeente Hoogland  
Sectie 0  
Schaal 1:1000



= gemeenschappelijk

	Appartementen 'De Markant' te Vathorst-Amersfoort.	01
<p>Voorgenomen splitsing in appartementsrechten van het kadastrale perceel in de kadastrale gemeente Hoogland, sectie/nr. 0 4352.</p> <p>Aangevraagd en gewaarmerkt, De Notaris,</p> <p>dd. 14-01-2022.</p>		